



Estado Libre Asociado de Puerto Rico
GOBIERNO MUNICIPAL
Guayanilla, Puerto Rico 00656

December 6, 2016

Eng. Sergio Bosques
Regional Storm Water Coordinator
Caribbean Environmental Protection Division
City View Plaza II – Suite 7000
#48 Rd. 165 km 1.2
Guaynabo, PR 00968-8069

**REF: NOTICE OF INTENT-NOI- MUNICIPALITY OF GUAYANILLA, FOR
STORM WATER DISCHARGES FROM SMALL MS4s IN URBANIZED
AREAS**

As part of the provisions of the Clean Water Act, Section 402 (p), requires that storm water discharges, associated with municipal separate storm sewer system (MS4s) in urbanized areas, to waters of the US must be authorized by a National Pollutant Discharge Elimination System (NPDES) permit.

In order to comply with this requirement, we are submitting our Notice of Intent for the NPDES permit no. PRR040062. The updated SWMP document will be modified in the next 6 months as required in Section 1.11 of the 2016 signed permit, and pursuant to Title 40, Part 122.34 Subpart B, or Permit Application and Special NPDES Program Requirements.

The Municipality of Guayanilla has the intention of comply with the Permit's provisions and EPA requirements. In you need additional information, do not hesitate to contact us at the Mayor's Office at (787) 835-2660 / 835-2360 or via e-mail at ntyguayanilla@gmail.com.

Sincerely,

Hon. Nelson Torres Yordán
Mayor

Enclosure

Notice of Intent

2017 FEB 17 14:13:19
RECEIVED
U.S. EPA
OFFICE
OF PUBLIC
AFFAIRS

GOBIERNO MUNICIPAL DE GUAYANILLA

NOTICE OF INTENT
NATIONAL POLLUTANT DISCHARGE ELIMINATION SYSTEM (NPDES) PHASE II,
REGULATED SMALL MUNICIPAL SEPARATE STORM SEWER SYSTEMS (MS4's)

INDIVIDUAL PERMIT

MUNICIPALITY OF GUAYANILLA

EPA REGION 2 PUERTO RICO

PREPARED BY
ECOSTAHLIA CONSULTORES AMBIENTALES
SAN JUAN, PUERTO RICO

United States Environmental Protection Agency
National Pollutant Discharge Elimination System
Notice of Intent (NOI) for coverage under the Small Municipal Separate
Storm Sewer System (MS4) General Permit (PRR040000) for Puerto Rico

Part A. General Information

1. Name of Municipality or Organization: Municipality Of Guayanilla
2. Type: ☐ Federal ☐ State ☒ Municipality ☐ Other: _____
3. Existing Permittee: ☒ Yes ☐ No If yes, provide EPA NPDES Permit Number: PRR040062
4. Location Address:
 - a. Street: #9 Calle Barbosa
 - b. City: Guayanilla State: PR Zip Code: 00656
5. Mailing Address:
 - a. Street: P.O. BOX 560550
 - b. City: Guayanilla State: PR Zip Code: 00656
6. Telephone Number: 787-835-2660 Ext. 244/248 Fax: _____
7. E-mail: ntyguayanilla@gmail.com
8. Standard Industrial Classification (SIC) Code (see instructions for common codes): 9199
9. Latitude: (use the format provided.) _____ Longitude: (use the format provided.) _____
2.2.4.2 Approximate *center of the regulated portion of the MS4*.
° ' " N (degrees, minutes, seconds) - ° ' " W (degrees, minutes, seconds)
Or
18.017666 ° N (degrees decimal) -66.790104° W (degrees decimal)

Part B. Primary MS4 Program Manager Contact Information

1. Name: Juan Carlos Laracuenta
2. Position Title: Director of Public Works
3. Stormwater Management Program (SWMP) Location (web address or physical location):
Not available
4. Mailing Address:
 - a. Street: P.O. Box 560550
 - b. City: Guayanilla State: PR Zip Code: 00656

5. Telephone Number: 787-835-2660 Ext. 244/248

6. E-mail: laracuentejc_1@hotmail.com

Part C. Eligibility Determination

1. Endangered Species Act (ESA) determination complete? ☒ Yes ☐ No
- a. Eligibility Criteria (check all that apply): ☐ A ☐ B ☐ C ☐ D ☒ E
2. National Historic Preservation Act (NHPA) determination complete? ☒ Yes ☐ No
- a. Eligibility Criteria (check all that apply): ☐ A ☒ B ☐ C ☐ D

Part D. Map/Boundaries

1. MS4/Organization Description of regulated boundaries (narrative):

The Municipality of Guayanilla is located in the southern coast of the island. It has a territorial extension of 64.31 square miles. Guayanilla is bounded to the north with the Adjuntas Municipality; south with the Caribbean Sea; west with the Yauco Municipality; and to the east with the Peñuelas Municipality. Guayanilla possesses a population of 21,581 inhabitants, according to the 2010 Census.

Guayanilla is divided into seventeen (17) wards: Barrero, Boca, Cedro, Consejo, Indios, Jaguas, Jagua Pasto, Llano, Macaná, Magas, Pasto, Playa, Quebrada Honda, Quebradas, Pueblo, Rufina and Sierra Baja.

The Guayanilla hydrology consists of the following water bodies: Guayanilla, Macana and Yauco rivers. The Guayanilla River originates in the Jagua Pasto neighborhood. It runs about 23 km (14.5 miles) and flows towards the Guayanilla Bay and into the Caribbean Sea. This river tributaries are the streams: Las Canales, Guarna, Grande of Sierra Baja, Rodadero, Limón, Motete and Consejo. The Macaná River travels a lesser extent, and its tributary is Los Cedros stream. The Yauco River flows through the Boca ward and discharges into the port of Guayanilla.

The Municipality of Guayanilla operates a municipal separate storm sewer system located in the urban area of the Municipality. The municipal urban area has a population of 3,949 and a territorial extension of approximately 0.71 square miles.

The Storm Water Sewer System in the urban area consist of a series of open channel culverts and catch basins, located within the right-of-way of municipal roads, interconnected by underground concrete pipes (24") that most of them discharges into the Guayanilla River and flow into the Caribbean Sea. The Guayanilla River crosses the municipality from north to south and across the Pueblo Ward. The Urban Area of the Guayanilla Municipality is mainly part of one watershed that discharges either directly or through tributaries into the Guayanilla River.

2. Location Map/Boundaries. A location map must be attached showing the pertinent city, town, wards, or boundaries, the boundaries of the Small MS4, including surface water body(s), and the "urbanized area" (UA) when applicable.

Is map attached? ☒ Yes ☐ No

Part E. MS4 Infrastructure (if covered under the 2006 general permit)

1. Estimated Percent of Outfall Map Complete? (Section 4.2.3 of 2006 general permit): 0 %
- Inventory work has been an ongoing process since 2014 using a web base interface tool www.ms4web.com.

a. If 100% of 2006 requirements are not met, enter an estimated date of completion: 12/30/2017
(MM/DD/YYYY)

- b. Web address where MS4 map is published:

If outfall map is unavailable on the internet an electronic or paper copy of the outfall map must be included with NOI submission.

Part F. Bylaw/Ordinance Development (if covered under the 2006 general permit)

1. Illicit Discharge Detection and Elimination (IDDE) authority adopted? ☐ Yes ☒ No

a. Effective Date or Estimated Date of Adoption: 06/30/2017
(MM/DD/YYYY)

2. Construction/Erosion and Sediment Control authority adopted? ☐ Yes ☒ No

a. Effective Date or Estimated Date of Adoption: 06/30/2017
(MM/DD/YYYY)

3. Post-Construction Stormwater Management adopted? ☐ Yes ☒ No

a. Effective Date or Estimated Date of Adoption: 06/30/2016
(MM/DD/YYYY)

Part G. Receiving Waters

List the names of all surface waterbody segments to which your MS4 discharges. For each waterbody segment, please report the number of outfalls discharging into it and, if applicable, any impairments. You may attach additional information.

Waterbody Segment that receives flow from the MS4	Number of Outfalls into receiving waterbody segment	Have any monitoring been performed to outfalls? (Yes/No)	List of Pollutant(s) causing impairment (if applicable)	List of TMDL Pollutant (s) (if any)
Río Guayanilla (PRSR67A) 2016	N/A	No	Low dissolved oxygen, phosphorus, nitrogen	Fecal coliform
Río Yauco (PRSR68A1) 2016	N/A	No	Phosphorus	Fecal coliform
Río Macana (PRSR66A) 2014	N/A	No		Fecal coliform
Punta Guayanilla to Punta Verraco (PRSC38) 2016	N/A	No	Turbidity, thermal modifications, pH	N/A

Part H. Summary of Stormwater Management Program (SWMP) under the 2006 Small MS4 General Permit

For every measurable goal and associated Best Management Practice (BMP) listed in the adopted program, provide the following information (You may include additional pages):

BMP Description or BMP ID (e.g. MCM-1)	Goal Achieved? (Yes/No)	Continued in next permit cycle? (Yes/No)	Who was the targeted audience? Explain reason for not achieving goal.	Modification(s) to goals or BMP for next permit cycle
MCM-1 Public Education & Outreach				
Development and Distribution of Storm Water-Related Materials	No	Yes	General public and private sector. Lack of funding to implement the task.	The municipality is expecting to continue with the BMP
MCM-2 Public Involvement & Participation				
Reforestation Program	Yes	No	City wide.	Other activities will replace the planting of trees.
Annual Cleanup	Yes	Yes	General Public and private sector.	The Municipality will continue with the same target goals.
Used Oil Recycling Program	Yes	Yes	General Public. City-wide effort	The Municipality will continue with the same target goals.
Vegetal Oil Recycling Program	Yes	Yes	General Public. City-wide effort	The Municipality will adopt the Cease the Grease Program starting in January 2017.

Part H. Summary of Stormwater Management Program (SWMP) under the 2006 Small MS4 General Permit

For every measurable goal and associated Best Management Practice (BMP) listed in the adopted program, provide the following information (You may include additional pages):

BMP Description or BMP ID (e.g. MCM-1)	Goal Achieved? (Yes/No)	Continued in next permit cycle? (Yes/No)	Who was the targeted audience? Explain reason for not achieving goal.	Modification(s) to goals or BMP for next permit cycle
MCM-3 Illicit Discharge Detection and Elimination Program				
Storm Sewer System Map - Develop a storm sewer system map	No	Yes	City wide. Lack of funding to start and complete the proposed task.	The effort will begin during the new cycle.

Program to Detect Failing Septic Systems	No	No	City wide. This task proves too difficult and costly to implement correctly.	Not continued.
Program to Direct and Eliminate Illegal Dumping	Yes	Yes	City wide.	An ongoing effort. It will continue under the new cycle.
Program to Detect and Eliminate Illicit Discharges	No	Yes	City wide. Lack of funding to start and complete the proposed task.	The Municipality will start the IDDE program with the help of a private firm during the new cycle.
Program to Detect, Identify, and Eliminate Wastewater Connections to the Storm Drain System	No	Yes	Urban areas. Lack of funding to continue with the implementation of the proposed tasks.	The Municipality will start the IDDE program with the help of a private firm during the new cycle.
Program to detect, identify and eliminate sanitary sewer overflows	Yes	Yes	Areas with sanitary sewer system.	Efforts will continue to report and fix SSO in collaboration with PRASA.

Part H. Summary of Stormwater Management Program (SWMP) under the 2006 Small MS4 General Permit
For every measurable goal and associated Best Management Practice (BMP) listed in the adopted program, provide the following information (You may include additional pages):

BMP Description or BMP ID (e.g. MCM-1)	Goal Achieved? (Yes/No)	Continued in next permit cycle? (Yes/No)	Who was the targeted audience? Explain reason for not achieving goal.	Modification(s) to goals or BMP for next permit cycle
MCM-4 Construction Site Storm Water Runoff Control				
Construction Site Inspection and Enforcement	No	Yes	Developers and Contractors. Lack of human resources to conduct the task.	The Municipality will add the necessary funds to conduct this task during the next cycle.
MCM-5 Post Construction And Re-Development Storm Water Program				
BMP Inspection and Maintenance	Yes	Yes	Developers and Contractors.	The task will continue during the next cycle. The Municipality will enforce this task with more inspectors.
MCM-6 Pollution Prevention and Good Housekeeping				
Employee Training and Education Program	Yes	Yes	Employees and supervisors from Municipal Public Works.	The trainings will start during the next cycle.
Parking Lot and Street Cleaning Program	Yes	Yes	City-wide. All parking lots and streets within the urban centre.	No changes to the proposed task.
Storm Drain System Cleaning Program	Yes	Yes	City-wide. All storm drain system in the urban centre.	No changes to the proposed task.
Spill Response and Prevention Program	No	Yes	Lack of training and human resources to implement the task.	A local contractor will prepare the trainings for municipal employees.
Used Oil Recycling Program	Yes	Yes	The activity will remain during the next permit cycle.	No changes to the proposed task. The activity will remain.
Recycling	Yes	Yes	The activity will remain during the next permit cycle.	No changes to the proposed task. The activity will remain.

Part I. 2016 Stormwater Management Program (SWMP) Summary

Public Education and Outreach (See Section 2.4.2 for detailed information of required BMPs):

BMP Description or BMP ID (e.g. MCM-1)	Education Topic (Identify the issue your BMP is educating the public about.)	Outreach Method (Describe the method used to convey this topic, e.g. mailing, events, school, etc.)	Measurable Goal (What is the end result of this program? What indicator will determine the goal has been met? (e.g., number mailing sent, people at event, class participation, etc.)
BMP-1 Storm Drain Stenciling Program	Non-Point Sources and Illegal Discharges	Storm Drains Stenciling	Number of storm water inlets painted and volunteers participating. The target is to have a minimum of 20 drains marked on yearly basis.
BMP-2 Annual Cleanup	Non-Point Sources	Volunteer and residents' participation	Number of tons of debris and recyclables collected during the cleanup events. The target is to collect 1 ton per year but to reduce the amount based in the success of the program.
BMP-3 Public Education Program	Illegal Discharges, Non-Point Sources and Erosion Control	Public Meetings, School Lectures	Number of residents attending the events. To target 200 students every year city-wide.
BMP-4 Community Hotline	Illegal Discharges and Non-Point Sources	Thru the general outreach activities, the Municipality encourages the use of the hotline to address the problems.	Number of calls and referrals to correct illegal discharges and non- point sources of pollution.
BMP-5 Social Media Education Campaign	Illegal Discharges, Non-Point Sources and Erosion Control	Posting of educational clips and messages in Facebook, Twitter, Instagram and Snapchat	Number of messages distributed, shared and viewed on a weekly basis.

Part I. 2016 Stormwater Management Program (SWMP) Summary (continued)

Public Involvement and Participation (See Section 2.4.3 for detailed information of required BMPs):

BMP Description or BMP ID (e.g. MCM-1)	Program Description (Describe the program and how it will inspire public participation, e.g. special events, volunteer sampling and monitoring efforts, household hazardous waste recycling, etc.)	Measurable Goal (What is the end result of this program? What indicator will determine the goal has been met? (e.g., participation, amount of sampling performed, waste collected, etc.)
BMP-1 Meet with Local Community Groups and Organizations to	The Municipality propose the use of public meetings through the community as a mean to request their involvement in the efforts coordinated by the administration.	The number of volunteers and the total number of communities covered during the public meetings.
BMP-2 Storm Drain Stenciling Program	Label stormdrain in the urban area. Involve residents and the general public in the activities to create awareness.	Number of storm water inlets painted and volunteers participating. The target is to have a minimum of 20 drains marked on yearly basis.
BMP-3 Conduct Public Hearings to address Stormwater issues	The Municipality propose conducting a yearly Public Hearing to address the most pressing issues related to pollution from Stormwater runoff.	The number of participants and issues identified and resolved as a result from the Public Hearing.
BMP-4 Adopt a Stream Program	The Municipality propose the development of an adoption program with local partners aimed to target one of the water bodies located within the urban area of Guayanilla.	Number of volunteers participating, number of issues found and resolved, number of liner meters adopted.

Part I. 2016 Stormwater Management Program (SWMP) Summary (continued)

Illicit Discharge Detection and Elimination (See Section 2.4.4 for detailed information of required BMPs):

BMP Description or BMP ID (e.g. MCM-1)	Program Description (Describe the program and how it will identify and remove illicit connections from the MS4, e.g. new regulations, investigation practices, removal of illicit connections, etc.)	Measurable Goal (What is the end result of this program? What indicator will determine the goal has been met? (e.g., adoption of bylaws/ordinances, amount of investigation performed, identified and removed illicit connections, etc.)
BMP-1 Prepare and implement an ordinance targeting illegal discharges at the storm sewer system	The Municipality propose to present a local ordinance and the necessary regulation targeting illegal discharges into the storm sewer system.	The number of discharges identified and corrected on a yearly basis.
BMP-2 MS4Web Permit Manager Tool	Guayanilla propose the use of the MS4Web Permit Manager as a mean to provide local residents and municipal managers with an internet based tool to access data on illegal discharges and all storm water outfalls in the city and how to address the issue of illegal discharges.	Number of residents and local managers using the Internet-based tool.
BMP-3 Used Oil Recycling Program	The Municipality of Guayanilla will implement the Cease the Grease Program as part of the city-wide effort to reduce the illegal discharge of used cooking oil in the storm sewer system and surface water bodies.	The number of gallons of used cooking oil recycled city-wide
BMP-4 Basic Surface Water Quality Monitoring Project	A basic surface water quality monitoring program will be established in a selected stream using parameters like pH, Temperature and Fecal Coliforms	Data from streams will be compared to data obtained on a regular basis by the PR Environmental Quality Board

Part I. 2016 Stormwater Management Program (SWMP) Summary (continued)

Construction Site Stormwater Runoff Control (See Section 2.4.5 for detailed information of required BMPs):

BMP Description or BMP ID (e.g. MCM-1)	Program Description (Describe the program and how it will help control stormwater runoff at construction sites, e.g. new regulations, construction practices, inspection protocols, etc.)	Measurable Goal (What is the end result of this program? What indicator will determine the goal has been met? (e.g., adoption of bylaws/ordinances, amount of inspections performed and sites actively regulated, etc.)
BMP-1 Ordinance to control runoff from construction sites	The Municipality will prepare, approve and adopt an ordinance specifically targeting runoff from construction sites impacting the stormwater sewer system covered by the permit.	The number of interventions and sites corrected. 100% inspection rate city-wide.
BMP-2 Construction Sites Annual Inventory	Then Municipality is required to develop an inventory of all public and private construction projects. The local government propose the use of the MS4Web Permit Manager to create and maintain the inventory identifying all construction sites. The tool helps the local managers to update the information as needed. All documents associated with the projects will be added in PDF format during the inspections and will be ready available to the inspectors.	The number of projects identified and certified ion compliance with the permit.
BMP-3 Development of SOPs for Construction Permits.	The Municipality propose the development of a Construction SOP aimed to provide developers with new means to address regulation requirement and for inspectors to identify deficiencies during inspections.	Number of Projects city-wide visited and brought into compliance with local ordinance and USEPA regulations.
BMP-4 BMPs during construction Poster	The Municipality will prepare and distribute a brochure aimed to contractors and construction projects with BMPs specifically design to reduce impacts to the stormwater runoff from construction activities.	A 100% coverage of active and permitted construction projects city-wide.

Part I. 2016 Stormwater Management Program (SWMP) Summary (continued)

Post-Construction Stormwater Management in New Development and Redevelopment (See Section 2.4.6 for detailed information of required BMPs):

BMP Description or BMP ID (e.g. MCM-1)	Program Description (Describe the program and how it will control stormwater runoff from properties after they are developed, e.g. new regulations, practices, or resources for contractors to use Low Impact Development (LID), etc.)	Measurable Goal (What is the end result of this program? What indicator will determine the goal has been met? (e.g., adoption of bylaws/ordinances, amount of implemented practices, development of capacity building resources, etc.)
BMP-1 Ordinance to control runoff pollution from post-construction projects	The Municipality will prepare, approve and adopt an ordinance specifically targeting runoff from post-construction projects impacting the stormwater sewer system covered by the permit.	The number of interventions and sites corrected. 100% inspection rate city-wide.
BMP-2 Standard Operating Procedures for Post-Construction Projects	The Municipality of Guayanilla propose to develop procedures to avoid runoff impacts to nearby surface waterbodies from stormwater controls located on completed construction projects. This will include impacts from retention ponds or non-covered areas prone to high rates of sedimentation.	Number of projects visited and certified in compliance with local ordinances and USEPA regulations.
BMP-3 Brochures	A series of brochures will be developed to be distributed among residents and managers of new and old housing and apartment projects city-wide aimed to educate them in good practices to avoid impacts to the existing stormwater infrastructure.	To distribute no less than 100 copies on a yearly basis.

Part I. 2016 Stormwater Management Program (SWMP) Summary (continued)

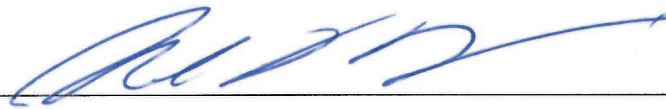
Good Housekeeping and Pollution Prevention in Municipal Operations (See Section 2.4.7 for detailed information of required BMPs):

BMP Description or BMP ID (e.g. MCM-1)	Program Description (Describe the program and how it will mitigate stormwater runoff at municipal properties or through municipal activities, e.g. installation of structural stormwater controls on the municipal properties, new practices to reduce pollutant exposure to rain events, runoff management, trainings, etc.)	Measurable Goal (What is the end result of this program? What indicator will determine the goal has been met? (e.g., structural BMPs installed, SOPs developed and implemented, etc.)
BMP-1 Trainings for Municipal Employees	The Municipality will provide trainings on BMPs for mechanics, green-areas workers, painters, electricians, and clerical employees on how to address simple issues identified in the daily tasks of Municipal Operations. The trainings will cover oil, paint and fuel spills, emergency response, good housekeeping, material storage, and record keeping.	The Municipality will provide their employees with two (2) workshops/trainings every year addressing BMPs and their responsibility under the USEPA-NPDES Permit.
BMP-2 SOPs for Municipal Operations	The Municipality will develop and implement the required Standard Operation Procedures for all the operations and maintenance activities conducted daily at Municipal Public Works. The SOPs will cover all activities that may have an impact on the NPDES-MS4 permit.	Number of inspections completed and certified in compliance with local ordinances and USEPA regulations.
BMP-3 SOPs for Municipal Facilities	The Municipality will develop and implement the required SOP for the operation of municipal facilities including parks and open space maintenance, sidewalks, streets and roads; and auto yards.	Number of inspections completed and certified in compliance with local ordinances and USEPA regulations.

Part J. Application Certification and Signature

I certify under penalty of law that this document and all attachments were prepared under my direction or supervision in accordance with a system designed to assure that qualified personnel properly gathered and evaluated the information submitted. Based on my inquiry of the person or persons who manage the system, or those persons directly responsible for gathering the information, the information submitted is, to the best of my knowledge and belief, true, accurate, and complete. I am aware that there are significant penalties for submitting false information, including the possibility of fine and imprisonment for knowing violations.

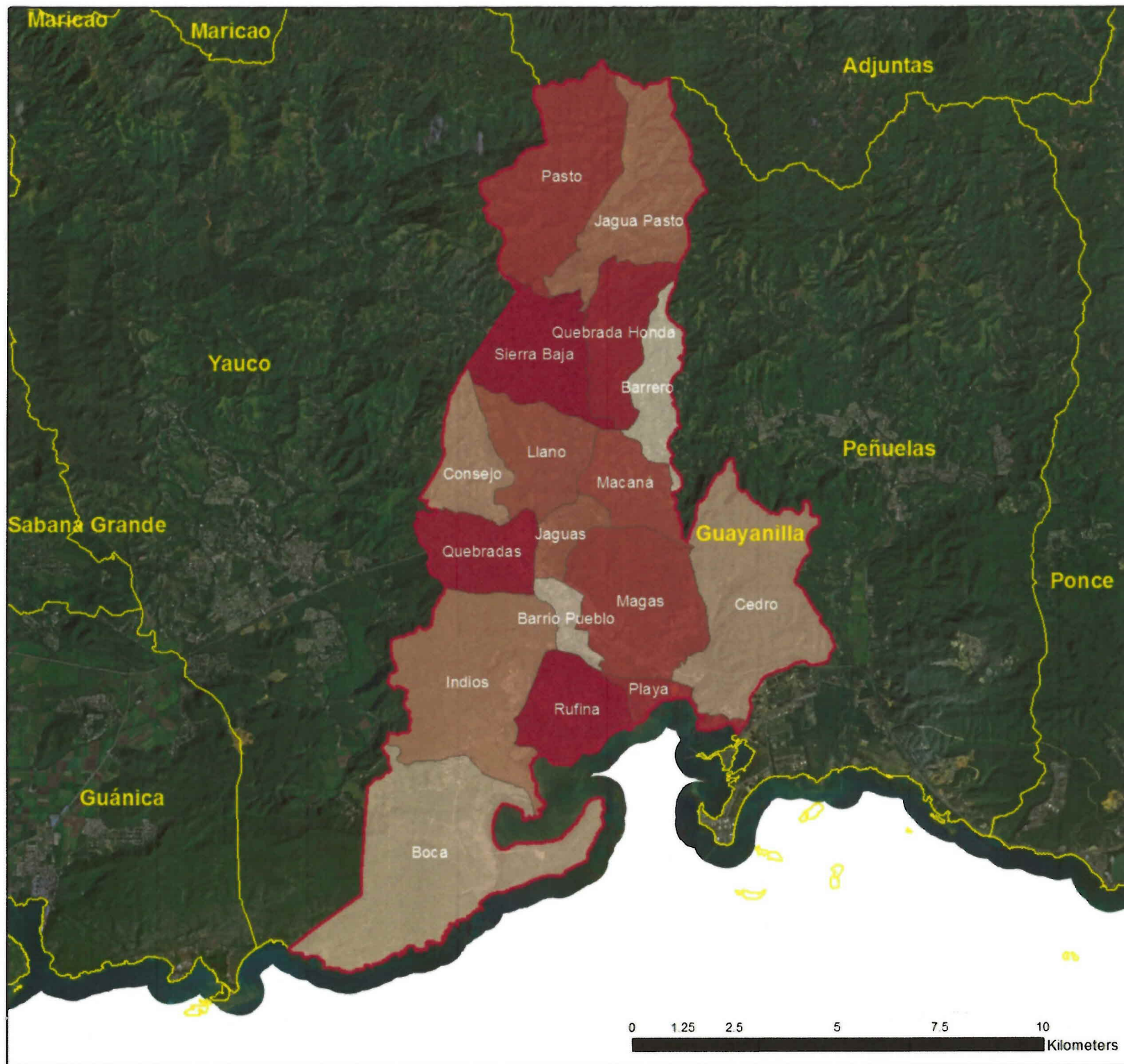
Signature of Mayor/Elected Official: _____



Print Name of Mayor/Elected Official: Nelson Torres Yordán, Esq.

Title MAYOR

Date: _____



Guayanilla Wards & Bordering Cities

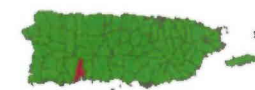
Legend

- Guayanilla
- Municipality
- Wards

Projection: Lambert
Coordinate System: NAD83 PR StatePlane



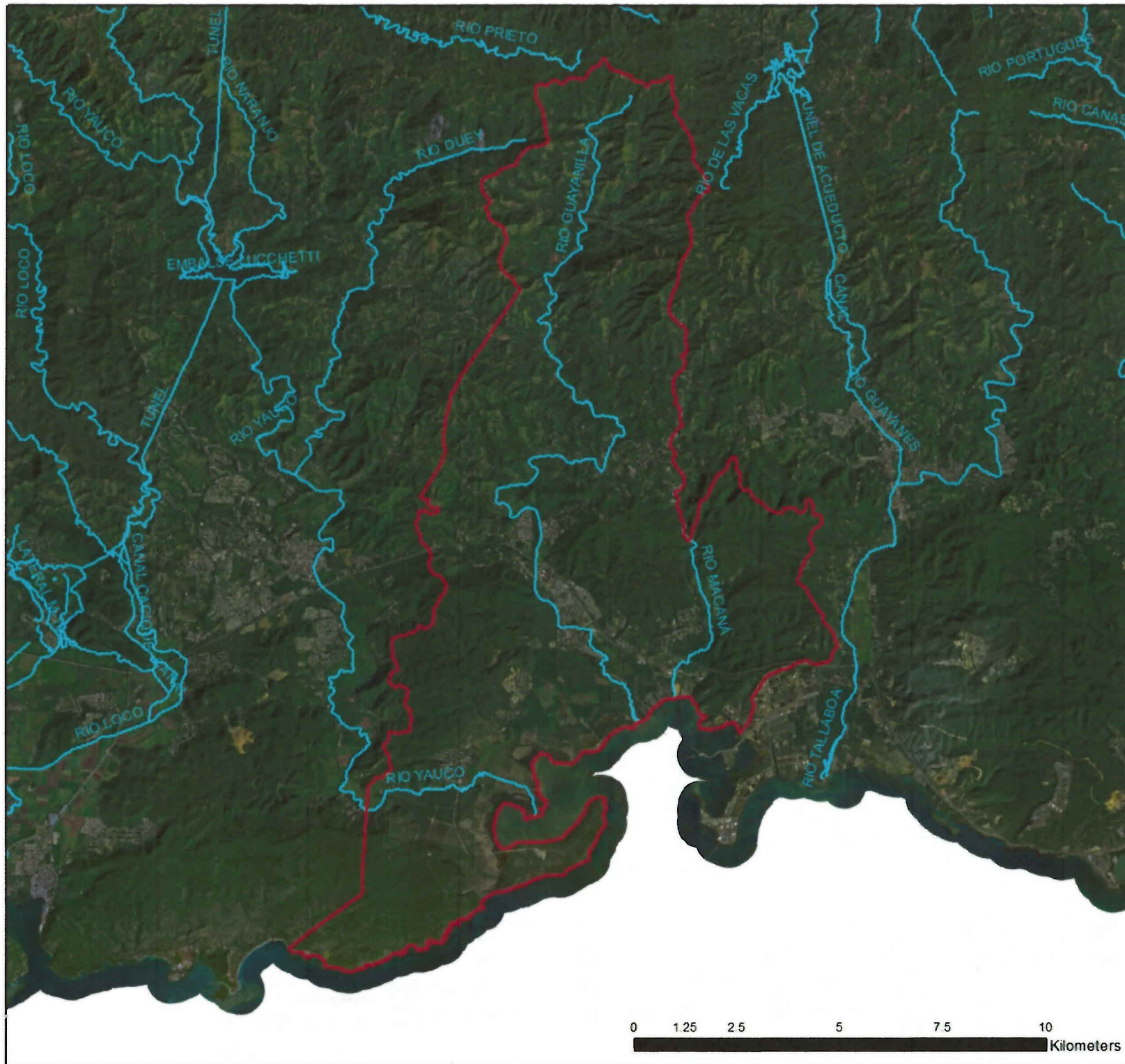
Source: JP
1:125,207



Puerto Rico



2016



Guayanilla Main Rivers

Legend

- Guayanilla
- Municipality

Projection: Lambert
Coordinate System: NAD83 PR StatePlane



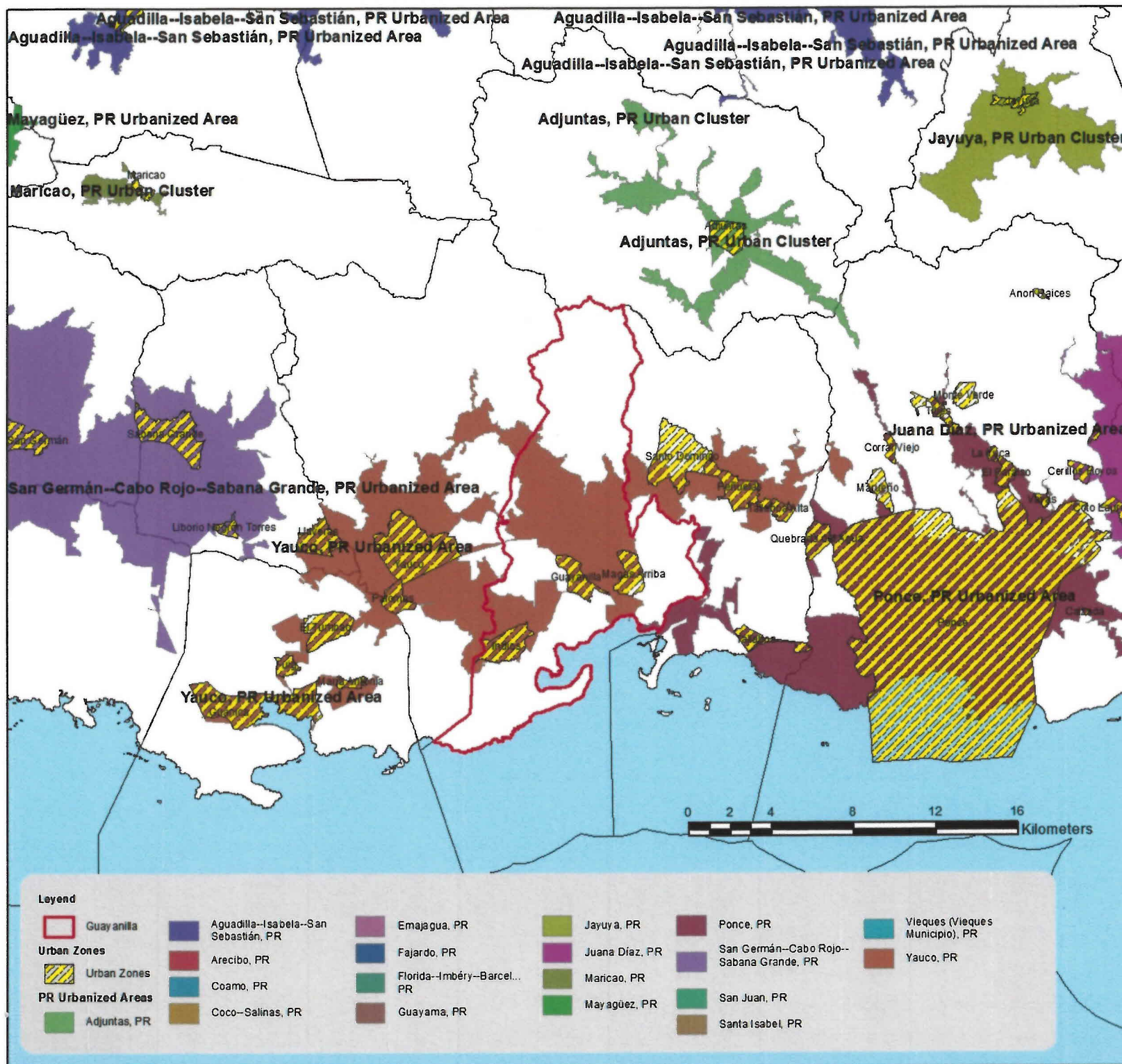
Source: JP
1:125,207



Puerto Rico



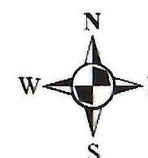
2016



Guayanilla, PR

**Census
Urbanized Area**

Projection: Lambert
Coordinate System: NAD83 PR StatePlane



Source: JP, Census

1:250,000



Puerto Rico



2016